

Beavers Take Fourth in National Rankings

The College's soccer team ended its reign last night.

The Beavers were de-roned as United States ampions by Drexel Insti-te of Technology and fin-ed fourth in the national nkings released exclusively 'Observation Post' by Dr. n Squires, President of the tercollegiate Soccer Foot-ll Association.

Drexel, a small college outside Philadelphia which plays major onents, Michigan State, and aryland finished ahead of the llege.

The new titleholders compiled 11-0 record. Drexel scored 76 als and allowed 15.

However, the Lavender woes did t end at the national rankings. t one Beaver made the first or ond All-American team. John ranos, last year's choice for first- ing, center halfback berth on national squad, received hon- ble mention.

Billy Sund, the Lavender all- e high scorer, received no rec- ition. Sund tallied 22 goals in fall campaign.

avender coach, Harry Karlin pressed "dissappointment" over final standings and All-America ections. "I thought Billy Sund erved a spot on the first or sec- d teams," he said. "But our ad had such great overall ength that it was difficult for opposing coach to pick out any star."

According to A. Huntley Parker, head of the National College ecer All-American Selection mmittee, the champions are set- ed on the basis of their won loss record, their ties, goals, ense, and caliber of opponents.

A substantial majority of the mmittee felt that Drexel was far erior to any other team in a sideration of all the depart- ts," Dr. Parker concluded.

OP Editorial:

Prestidigitation

Much skillful political legerdemain was required in the process, but what was fundamentally an idealistic question is magically transformed yesterday into a question of rift.

The General Faculty, working concertedly with the General Faculty Committee on Student Activities (GFCSA) and President Buell G. Gallagher, ruminated the lists question for what was, we grant, a long, long time. Tired of dealing with the matter in its old, uninteresting form, they finally decided to garnish the drab issue by superimposing upon the issue of fee allocations.

At yesterday's General Faculty meeting it was decided that religious, political and "social action" groups would be privileged to exist without submitting membership lists. But the erudite faculty, displaying uncommon artfulness, managed to deny these organizations the right to receive fee funds. This artfulness was, no doubt, spurred on by anticipated thrift. Who doesn't like to save money?

Religious, political and "social action" groups have been exempted from a College duty, but they have also lost a most important right—the right to receive funds. It is interesting that the student body was never consulted in determining the use of funds which they themselves supply.

The students should have had the opportunity to vote on a referendum to determine if they wish to deny money to certain groups.

It is rather frightening that the new system is per-

(Continued on Page 2)

Voice of the Student Body

OBSERVATION POST

Vol. XXIV—No. 23

389 UNDERGRADUATE NEWSPAPER OF CITY COLLEGE

Friday, January 16, 1959

General Faculty Denies Fee Funds To Political, Religious, 'Action' Units

Rabbi Blasts Exclusion At Faculty Meeting; Referendum Urged

By BERNIE LEFKOWITZ

Leaders of the College community were faced with problems of varying intent today in the wake of the "compromise" plan adopted by the General Faculty yesterday.

For Rabbi Arthur Zuckerman, Hillel Director, this morning marks the start of a campaign "to search out additional means of support."

"I am certain that members of Hillel will raise the funds necessary to sustain the organization," Dr. Zuckerman said.

The Director described the plan as "most unfortunate." "Hillel is a cultural group not a synagogue. This plan has nothing to do with religion," he maintained.

Dr. Zuckerman protested that the resolution was "illogical." He argued that the denial of funds to religious, political and "social action" clubs is "adjunct to an extraneous issue—membership lists." "I was never invited to speak,"



Rabbi Arthur Zuckerman Calls Plan 'Illogical'

he charged, "the General Faculty never heard our views. They never knew what our side of the issue was."

The future is not clear of conflict for President Buell G. Gallagher either. His comment just at the end of the SG parley, summed up his thoughts. "My position is not changed," the President said, "GF does not agree with me and I must now administer the resolution."

Professor Mark Brunswick (Chairman Music) saw this morning as the start of sustained student protest against the plan. Dr. Brunswick, who led minority opposition to the GF action, called for intense pressure by the students "short of violence."

Student Government President-elect, Renee Roth claimed the action as a "minor victory" in the battle over membership lists. "But the whole question was railroaded through without adequate discussion," she declared. Miss Roth promised that she will submit a referendum to the student body if SG agrees.

Another dissenter, Prof. Stewart C. Easton (History) viewed the morning with less anxiety than many of his comrades. "The clubs affected by the regulation do not lose the facilities of the College nor the seal. In the case of the political and social action organizations the loss of fee funds is slight," he said.

"But of course the lumping together of the two issues is ridiculous," he added.

Mike Horowitz, SG President, was "disillusioned" the morning after. He said the plan "accommodated the prejudices of almost every person in GF."

Barred Groups Exempt From Submitting Lists

By STEVEN LUDWIG

Religious, political and "social-actions" clubs will be permitted to function in the future without having to submit membership lists—and without receiving fee funds.

Under the lists system instituted yesterday by a 60-28 vote of the General Faculty, other organizations will be governed by a system of compulsory membership rosters and will continue to receive fee funds.

The plan, suggested by the General Faculty Committee on Student Activities (GFCSA), contained four provisions:

- All student organizations shall be chartered.
- Except for religious, political and "social-action" clubs, all campus groups shall be eligible for fee funds and shall submit full membership lists together with membership cards.
- The groups exempted from submitting complete rosters will have to give the names of their officers. They may submit complete lists if they wish.
- Members of religious, political and "social-action" clubs may file individual membership cards if they wish.

The Student-Faculty Committee on Student Activities (SFCSA) will decide what clubs fall under the

prohibitive aspects of the new resolution.

Reasons For Proposal

The GFCSA report, submitted by its chairman, Dean Daniel F. Brophy (Students), cited the "question (of) the propriety of granting public funds to religious, political or social-action organizations" and the "differences of opinion concerning registration of all members



Dean Daniel F. Brophy Submitted GFCSA Plan

of such organizations" as the reasons for its resolution.

Professor Samuel Hendel (Gov't) had the floor at the conclusion of the last General Faculty meeting and therefore was the first to speak at yesterday's session.

He proposed that Student Government, in consultation with the Department of Student Life, be empowered to "make such regulations as are necessary and appropriate for the chartering of student organizations and the distribution of fee funds."

The vote on Professor Hendel's motion, taken at 3:45 P.M. was seventy against, twenty-seven for, with one abstention.

Dean Brophy then introduced his sub-committee's report and Professor Robert Jahrling (Education) moved that it adopted.

At this point discussion brought out the question whether lists and fee funds should be considered as

(Continued on Page 3)

Lefkowitz Chosen To Head OPaper

Bernie Lefkowitz, a lower senior, has been elected Editor-in-Chief of *Observation Post* for the spring semester.

The other members of the Managing Board will be Sandra H. Rosenblum, Associate Editor; Herb Rosenblum, Business Manager; Steven Ludwig, Managing Editor; Rita Ashkenas, News Editor; Carol Whitehouse, Features Editor; and Larry Gottlieb, Sports Editor.

On the Associate Board, Renee Cohen was chosen Assistant Features Editor. The Copy Editors' positions will be filled by Ed Marston, Bobbie Schneider, and Peter Steinberg. Also elected to the Associate Board were Howard Kaplan, Circulation Manager, and Mitch Koch, Photography Editor.

Estrella Meijomil and Stan Shepko were elected to the Contributing Board. The Editorial Board will consist of the Managing Board and Renee Cohen, Carl Gewirtz, and Ed Marston.

OBSERVATION POST

SANDRA HELFENSTEIN
Editor-in-Chief

(Continued From Page 1)

manent. Unpalatable as it was, last semester's system, denying funds and use of the College's name to organizations not submitting lists, was less obnoxious because it was temporary.

Equally frightening is the fact that groups not falling within the religious, political or socially active sphere have now no alternative but to submit lists. Even the right to exist without using the College's name and funds has been taken away.

No longer will College money be used to promote interest in religious, political and social matters. The General Faculty has at last succeeded in divorcing itself from this uncomfortable commitment.

Next term, when the Christian Association, together with the Newman Club and Hillel, attempt to launch a Brotherhood Week, they will have to look elsewhere for the necessary funds.

Perhaps it's a good thing. One can't be too careful these days. There is always the possibility that Brotherhood will upset some comfortably established traditions.

Wrap-Up

The conclusion of an old term does not alleviate the old problems. Nor does it erase the satisfaction of significant victories.

After countless speeches, letters, editorials, and resolutions, state aid is practically a reality.

The men of the Chamber of Commerce suggested the idea of a tuition fee and were silenced by the united opposition of those who believe in the students' right to a free higher education.

In both the fight for state aid and the battle against the tuition fee, the voices of the students, faculty, alumni, and administration joined together to defeat the forces of reaction.

Unfortunately this unanimity of spirit was not demonstrated in other areas during the semester.

Instead of working with the students toward constructive goals, the administration and faculty have directed their energies toward proving to the world that the College is the "All-American" institution that Bill Stern alleged it wasn't, in his fanatical outburst.

And thus we enter the new semester finding ourselves burdened with an even greater number of restrictions than in the past.

The Smith Act Ban set the stage for the appearance of Ben Davis speaking before 250 students, one block from the College, while the Municipal Council of Administrative Presidents sat in their offices isolated from the student search for intellectual satisfaction.

President Gallagher has said that he does not expect the Vienna Youth Festival to receive any support from the students of the College. This is just an extension of the isolationist attitude which has been a prime factor in the rift between the student body and the administration.

Membership lists, in their new unappetizing form, leave the same bitter taste in our mouths.

The students, through their own initiative, have demonstrated their abilities in the political and social spheres. Their spirited participation in the Youth March for Integrated Schools proved their desire for an active role in today's world. We would also like to congratulate President Gallagher for his cooperation with the student community in this inspired project.

The Student Democratic Slate, formed last term, presented the student body with a specific program. The complete success of the Slate proved that when confronted with specific issues, the student body will take a definitive stand.

The students have accomplished much this term with and without administrative and faculty assistance. How much more could be accomplished if a true rapport could be established between these groups.

Frosh Guidance Set for Alterations: Thirty 'Big Brothers' Offer Counsel

By GRACE FISCHER

A new and expanded freshman advisory program will be initiated at the College during the spring semester.

"In the light of this, it is extremely important that the freshman be given a sense of belonging to the College," said Louis Nashelsky, co-chairman, along with Barbara Mendelsohn, of the SG Freshman Advisory Committee. "The best way that this can be accom-

plished," he continued, "is through contact with the students at the College."

In order for this scheme to materialize, the present program will be expanded to include a volunteer core of "big brothers" to work with the students throughout their lower freshman term.

Thirty Aid Students

Thirty of these "big brothers" have already been chosen to aid the 150 students entering next month. The large number of advisors in relation to the small entering class is meant to ensure a nucleus of trained advisors for the fall term.

As part of their duties, the "big brothers" will act as guides in a tour of the College, and help the

students during registration. They will meet with a group of entering freshmen three times during the semester. These meetings will have no connection with the weekly freshman orientation classes.

The upperclass advisors will also meet with the students after the Assembly for Entering Freshmen on February 2, to discuss the College and answer any questions pertaining to it.

Nashelsky emphasized the growing necessity for the newly-created advisory system. "Since the nature of the program is so vital to the freshmen and to the school, it is about time that it take its rightful position of importance."

Tix...

Tickets for "Rodney in Town," musical comedy to be presented in the Little Carnegie Recital Hall February 21, will be on sale for \$2.50 each, February 7 or 9 in the Finley Student Center. The production is jointly sponsored by Club Coed and the Musical Comedy Society. All actors appearing in the play attend the College.

Classified Ads

ROOMS

Private house, all accommodations, 601 Walton Ave. (off. Yankee Stadium). Call after 6 PM. Mrs. Faulkner at ME 5-3981.

ROOM

Three blocks from Campus. Kitchen Privileges. Reasonable. Call WA 6-0336. Call Frank Ares, 615 West 143: Apt. 31: AUdubon 6-8866.

LOST

One fraternity pin - Beta Sigma Rho - if found please call WI 2-5576 evenings.

FURNISHED ROOM

Private. AU 1-5413, Apt. 65, 607 West 137th St. Call after 6 PM.

BY POPULAR DEMAND

JOHN OSBORNE'S MOST ELECTRIFYING DRAMA
BACK ON BROADWAY AT OFF-BROADWAY PRICES

EILEEN
HERLIE

ROBERT
STEPHENS

in
"Epitaph for
GEORGE DILLON"

by John Osborne and Anthony Creighton

with ALISON LEGGATT

THE SAME GREAT CAST AND PRODUCTION \$3.60
AT THE LOWEST PRICES ON BROADWAY 3 TOP

SEATS NOW BY MAIL AND AT BOX-OFFICE

Evgs. Incl. SUN. Mats. SAT. & SUN. Orch. \$3.60; Balc. \$2.90; 2nd Balc. \$2.30. SPECIAL MATINEE THURS. JAN. 15. Please enclose stamped, self-addressed envelope with mail orders.

HENRY MILLER'S THEATRE 43rd St. East of B'way. BR 9-3970



"I don't mind your running out of gas - but Camels!"

Many a girl would rather walk home than do without Camels. For the 10th straight year, this cigarette outsells every other - every filter, every king-size, every regular. The Camel blend of costly tobaccos has never been equalled for rich flavor and easygoing mildness. The best tobacco makes the best smoke.

Don't give in to fads and fancy stuff...

Have a real cigarette - have a CAMEL



R. J. REYNOLDS TOB. CO., WIRETON, N. C.

Faculty...

Continued From Page 1)
 separate issues rather than
 ned as in the GFCSA plan.
 motion for separation was
 ed by a voice vote.
 fessor Henry H. Villard (Eco-
 s) proposed an amendment
 GECSA resolution, deleting
 ention of fee funds.
 voice vote on Professor Vil-
 proposed amendment proved
 elusive. The motion was de-
 at 4:15 P.M. by a division
 e house, with those for the
 dment lining up on one side of
 om and those against on the
 side. The amendment was
 ted.
 4:25 P.M. the General Fac-
 voted on the GFCSA proposal.
 were fifty-nine votes for the
 sal, twenty-eight against, two
 ntions, one blank ballot, and
 validated ballot marked "Mo-
 The invalidated ballot was
 ed as one for the resolution.

**Girls' Locker Area
Was Bowling Alley**

Bowling rather than disrobing
 was once the activity carried out
 in the halls of Park Gym which
 now serve as women's locker
 rooms.
 The bowling alley was removed
 in 1955 when the College took pos-
 session of the buildings which now
 comprise South Campus.
 According to Professor Albert
 P. d'Andrea (Chmn., Art), design-
 er of the plans for the renovation
 of South Campus, some consider-
 ation was given to maintaining the
 bowling alleys for recreational
 purposes but this idea was aban-
 doned when no other spot could be
 found for the women's lockers. It
 was also considered financially un-
 feasible to transfer the alleys to
 some other building.
 Therefore, bowling will have to
 be done off campus.

Mic...

Final picture appointments
 for Microcosm, the senior year-
 book, will be accepted during
 registration. A \$3 deposit will
 be required. Final payments on
 Microcosm must be paid by Feb-
 ruary 17.

**ID, Bursar's Cards
Needed to Register**

Students must present a "valid"
 photo identification card and a
 Bursar's Receipt in order to reg-
 ister for the spring 1959 semester.
 The Bursar's Office will start
 selling cards Monday. Photo ID
 cards may be validated in Room
 123 Finley from 9 AM to 5 PM
 next week. From Monday, January
 26, to the end of registration, photo
 ID cards may be validated in Knit-
 tle Lounge, Shepard.

**Opera Group Created;
Will Perform in English**

By RENEE COHEN
 The language barrier will be removed from traditional
 opera when English makes its appearance in the librettos of
 the newly formed Opera Workshop.
 "When you are forced to sit like
 a foreigner at an opera given in
 something other than the native
 tongue," commented Professor
 Fritz Jahoda (Music), faculty ad-
 visor to the workshop, "you cannot
 really appreciate its full meaning."
 "Opera," he continued, "is not
 only music, but a drama about
 life and people set to music. If one
 wants to hear music alone, he
 should go to a concert. "To fully
 appreciate opera," he added, "one
 must understand the dialogue as
 well as enjoy the music."
 The Opera Workshop will pre-

sent excerpts from various operas
 in English. "I was very much
 impressed with its formation,"
 Professor Jahoda noted, "and I was
 amazed at the amount of talent
 to be found on campus."
 He gave credit for its organiza-
 tion to Barbara Wood, a post-grad-
 uate music student at the College
 who has done some professional
 concert work. He said she possesses
 a "contagious enthusiasm" which
 has evidently caught on.
 Many unsuccessful attempts to
 form a workshop were made in the
 past. Now, the new organization
 will seek to make opera a part of
 tradition at the College by per-
 forming at student and alumni
 functions.
 Among the members of the
 workshop are Victor Balla, sing-

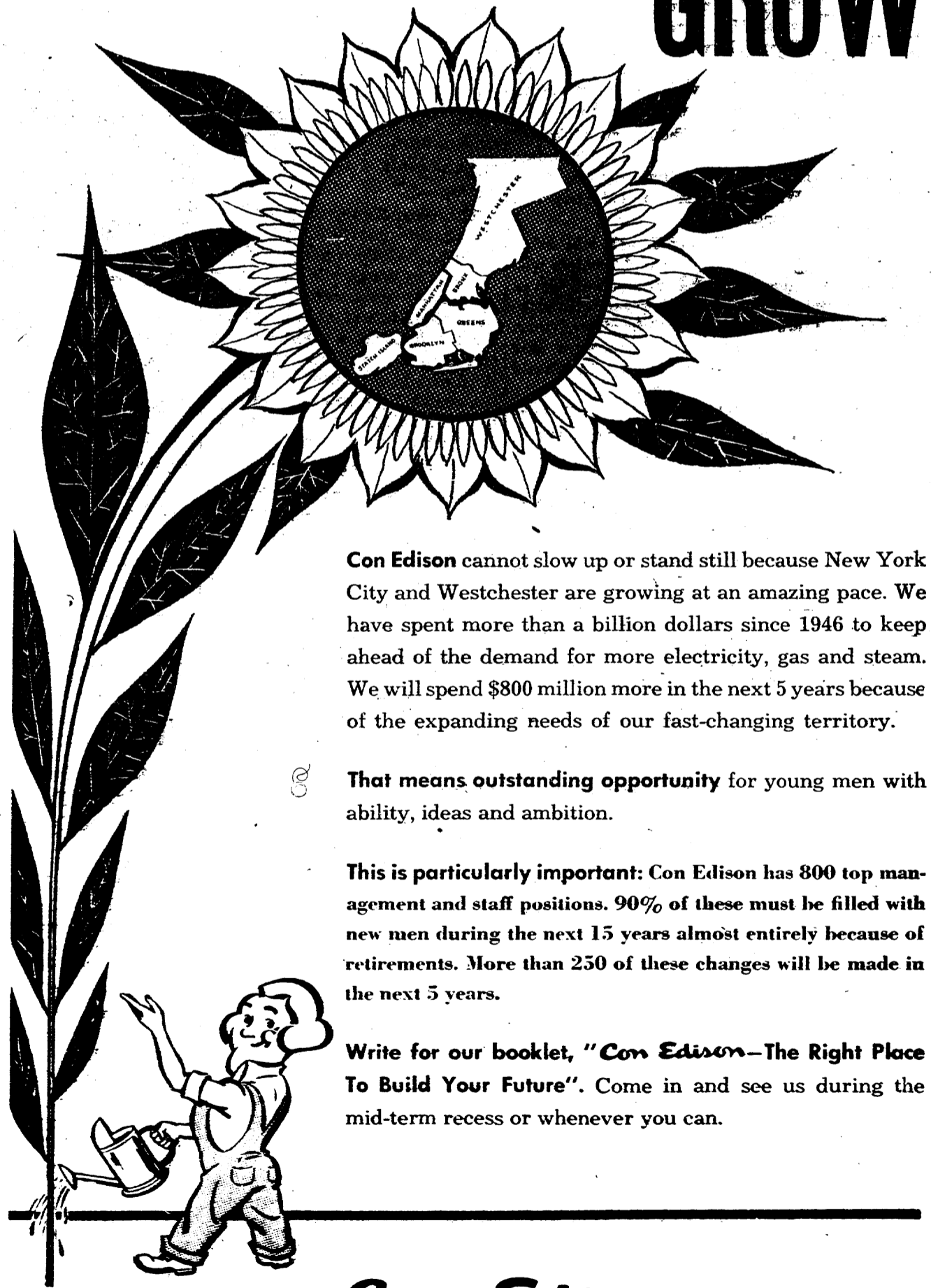


Frosty Faust
 ing Bass, Dino Constantine Casso-
 las, a tenor who is here on a fel-
 lowship, Gail Dobrofsky, a Mezzo
 Soprano recently awarded a schol-
 arship to study voice, and Sopra-
 nos Sylvia Mills, Beth Krause and
 Barbara Wood.

**SG Pres. For
Religious Unit**

Religious social fraternities
 have a rightful place at the
 College, according to Student
 Government President Mike
 Horowitz.
 Fraternity brothers ought to
 practice "private discrimination"
 for themselves, but "not against
 others," Horowitz declared yester-
 day.
 "It is reasonable to turn down
 pledges because their sympathies
 are not in line with the prevailing
 attitudes of the fraternity," he ob-
 served. "If the aims of the frat
 are to promote Judaism or propo-
 gate the Christian faith, then
 prospective members should be in
 agreement."
 The SG President added that he
 is in favor of the College regula-
 tion which forbids sectarian dis-
 crimination by any student organi-
 zation. "But frats are fraternal,
 not random samples and there
 should be a common tie among the
 individuals," he said.
 "Besides religious interests are
 more binding than such things as
 parties or athletics," Horowitz
 concluded.

GO WHERE THINGS GROW



Con Edison cannot slow up or stand still because New York
 City and Westchester are growing at an amazing pace. We
 have spent more than a billion dollars since 1946 to keep
 ahead of the demand for more electricity, gas and steam.
 We will spend \$800 million more in the next 5 years because
 of the expanding needs of our fast-changing territory.

That means outstanding opportunity for young men with
 ability, ideas and ambition.

This is particularly important: Con Edison has 800 top man-
 agement and staff positions. 90% of these must be filled with
 new men during the next 15 years almost entirely because of
 retirements. More than 250 of these changes will be made in
 the next 5 years.

Write for our booklet, "Con Edison—The Right Place
 To Build Your Future". Come in and see us during the
 mid-term recess or whenever you can.

Con Edison OF NEW YORK
 PLACEMENT BUREAU, MAIN FLOOR • 4 IRVING PLACE, NEW YORK 3, N. Y.

Fencing and Basketball Teams Are Prepared For Heavy Inter-Session Playing Schedules

Hoopsters Set to Battle 3 Away from Home, Fourth in Wingate

By STEVE SOLOMON

Manhattan, Hunter, Rutgers and St. Francis will furnish the opposition for the College's basketball team during Inter-Session.

"I think we'll be in pretty good shape for these games," remarked Coach Nat Holman. "Our morale is very high and the current two-week rest should be a break for Hector Lewis."

Lewis re-injured his leg during the first half of the Fairleigh Dickinson game but may be ready for the Manhattan tilt.

The Beavers invade the Jasper Gym on Tuesday, January 27, and Holman is well aware of the difficulties this game will present.

"They're a very strong team, with plenty of height. It may seem funny, but I'm glad we play them in their gym. You see, they have a very narrow court, something like our Tech gym, and if Lewis and (Joel) Ascher are ready—well, who knows what can happen?"

Coach Ken Norton of Manhattan is also optimistic about the forthcoming game. "This is a traditional game," he said, "and it's always tough, no matter what the record says."

The record says that Manhattan

defeated the Lavender last year by a 74-58 score, and this year the Jaspers have already taken five out of eight games.

"We've got to get going," Coach Norton went on. "Each one of our starting five has already been injured this season."

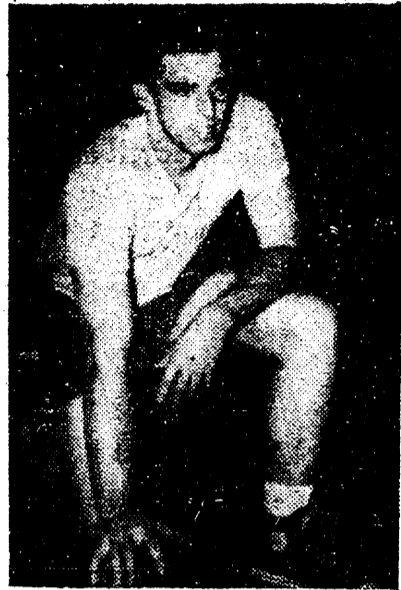
After the Manhattan game, the Beavers rest until Saturday, January 31, when they journey into the Bronx for a re-match with Hunter College. The Beavers defeated Hunter earlier this season in a very close game and expect this one to be just as tough.

"They're very rough on their home court," Holman explained. This was certainly the case last year when the Hawks came from behind to defeat the Lavender 52-50.

This year the Hunter team has been hurt by the injury of its top scorer, Barry Falk. It is possible that Falk will be ready to play against the Beavers.

Leading the Hunter attack, whether Falk is in there or not, will be John Shoutta 6'5" and Mike Brier 6'2". Shoutta and Brier are averaging twenty and fifteen points respectively.

On Wednesday, February 4, the Beavers will be entertained by



Joel Ascher
Possible Starter

Rutgers University at its Brunswick, New Jersey, court. Coach Warren Harris has a "very strong" team that started off the season slowly, but which is currently on a four-game winning streak.

It will be "home, sweet home" for the Lavender Five on Saturday, February 7, when they return to Wingate Gym to entertain St. Francis.

Coach Danny Lynch will bring in a hungry bunch of Terriers who have won only two out of eleven games to date. However, with players like Pete Schweitzer, their 6'4" center and sophomore star Richie Dryer, the game should be very interesting.

Certainly the Beavers will have no vacation during Inter-Session,

Parriers to Invade Jersey and Mass. During Vacation

By JOE LOWIN

Travel schedules and a search for third place performers are the keynotes to the Intersession activities of the College's fencing team.

First stop on the Beaver's timetable is the invasion of Princeton, New Jersey for a duel with the vaunted Tigers. Cambridge, Massachusetts will be the setting, a week later, for a clash with the Harvard Crimson. From there the team will return to New York.

Expects Close Contests

When asked if there was any one adversary who might prevent a sweep by the College, Coach Edward Lucia replied "I never scout an opponent. If my men can meet my standards, I don't care whom we fence."

The coach did say that both rivals should provide equally close contests. "At the optimum of our ability the match will be decided by a 14-13 score either way," he said. "Optimum of ability" means, for Coach Lucia, a favorable performance of his third men. "The third man in each event will decide the match," he said. "However," he continued, "I have not yet decided who they will be."

Johnson Leads Foil

The front-runners will be the same men who have exhibited consistently good form throughout the season.

Captain Alonzo Johnson and

Reginald Spooner share the weight of the foil team attack. Both men won two of their three bouts in last week's 16-11 conquest of Rutgers.

Mayer Sweeps

The sabre squad, which captured six bouts against Rutgers, is led by Harold Mayer and Andre Kemeny. Mayer swept his three bouts while his teammate, Kemeny, lost his first bout of the season and added two more wins to his record against Rutgers.

Unsheatheing their epees again



Coach Ed Lucia
Close Matches

Princeton and Harvard will be Bob Welworm and Walter Kraus both were twenty-one last week. Possible starters on the epee unit are Milton Yabrow and Gerry Sobel. Coach Lucia made clear, though that even if they do recover from their leg injuries in time for either meet, they will be sadly out of condition, since they have not seen action at all this season.

Wrestlers To Meet Wilkes College; Go To Pa. for Match With Champs

Spirit is unusually high on the College's wrestling team as it prepares for a trip to Wilkes Barre, Pa. on Saturday, January 31, to meet last year's Mid-Atlantic Conference (MAC) champions, Wilkes College.

Coach Joe Sapora said that the boys are very excited about the trip. "We're not going out there to get beaten, you know," he said. "We're going to Wilkes to do them battle; we'll be trying to beat them."

"They're Mid-Atlantic champs, though, and it's going to be a very rough match," continued the coach. The statistics bear out Coach Sapora's last remark. In the last two years Wilkes has lost only one match; they have not lost at home in three years.

"Last year's team had a 9-1-0 record," said a spokesman from Wilkes. "But the three champs we had last year are all gone now."

Captain Walt Glowgowski, a senior, finished second in the MAC 177 pound championships. Also returning is Marv Antinnes, who took second place at 167 pounds. The third returnee is 137 pound Joe Morgan, who, at 147 last year, placed fourth.

In their only meet this year, Coach John Reese's wrestlers defeated Hofstra by a 28-8 score.

The Beavers, on the other hand,

have already played three matches—losing only to the Long Island Aggies. The two wins were at the expense of Temple, by a 24-10



Coach Joe Sapora
Squad Faces Wilkes

score, and Brooklyn Poly, by a crushing margin of 32-2.

Coach Joe Sapora indicated that next week, after the final examinations, he will hold a series of challenge bouts to determine who,

exactly, his starters will be.

Co-Captain Milt Gitelman is a good bet for the heavyweight role. Among all his other qualifications, Gitelman has to his credit a pin in the last match against Poly. Jack Izower, the other captain, has consistently shown his prowess at 147. The lightest man on the squad, Myron Wollin is one of the matmen without a serious challenger.

Sophomore Ron Alter pinned his BPI 131 pound opponent, last time out. Two other men have two pins apiece to their records—both in victory. They are Ron Reis (137) and Phil Rodman (157).

After the meet at Wilkes the Lavender will return to the College and will host the East Stroudsburg, Pa. wrestlers.

Last year the Stroudsmen upset the Beavers who are out to get revenge on February 7. Coach Sapora said, "It'll be a good match, but we should be able to take them."

Starting time for the match is 2 p.m. The place is the wrestling room in the Tech Gym.

Swimming Team Will Oppose Disabled Brooklyn Competition

With a soggy 2-3 record as a foundation, the College's swimming team will face the Brooklyn College mermen on Saturday, February 7, at 2 PM in the Brooklyn pool.

Brooklyn's foundation

is not too firm either. Sporting a 2-2 record, the Kingsmen have so far this season displayed mediocre swimming in the clutch. Just as the Beavers have been plagued with an inability to capture the last event of their two previous matches, Brooklyn has slipped when the chips were down in their two losses against Manhattan and Adelphi.

The Kingsmen have defeated Morgan State Teachers College and Hunter College. In any event, it looks like the Brooklyn match should go right down to the wire.

According to Leslie Harrington, coach of the Kingsmen, his big men will be Marshall Barshay, Shelly Spiegelman, and Joe Bragan. Barshay swims the 220 and the 440, Spiegelman swims the breaststroke, and Bragan takes charge in the long distance swim.

Commenting on his chief performers to date, Coach Harrington said, "All my boys have shown good performances this season. We should give you a good run for your money."

"On the debit side," however, Coach Harrington added, "Tom Radolinski, our fastest man on the team has just graduated. I hope we can make up for that loss."

For the Lavender, it will be Joe White, Nick West, and Mike Bayuk who will lead the plunge.

While the Beavers will see action in only this contest during Inter-Session, the Kingsmen will also face the Merchant Marine Academy of January 31.

In the remainder of the season the Beavers will face the Merchant Marine Academy, New York University and Lafayette.

b
s
l
i
o
h
n
e
o
e
e
a
n
'
D
er
o
w
y
o
er
on
th
p
e
y
o
er
ac
o
on
er
or

00

6

OBSERVATION

FEB. 9, 195

TO

MAY 19, 1

SERVATION Post - 25

9, 1959

TO

Y 19, 1959

Ve

F R

S
loa
sio
cat
to
ing
T
yes
era
clu
for
for
S
mu
mo
ter
ter
pa
ten

C 7

th

S li

col
no
bu
rea
the
S
duc
ern
wil
wh
pro
C
ma
cal
of
and
con
wor
of-
edu
hor
M
thi